

# ATLANTIS

The Atlantis series is comprised of 6 rocky colourways in a natural finish porcelain tile.



## national tiles

Suitable for both wall and floor application, this earthy series fits perfectly into the Australian landscape.

**Basic Specifications:**  
Glazed Porcelain  
Available in a natural finish  
Sizes: 300mmx300mm & 453mmx453mm  
Suitable for both wall and floor application  
Pressed edge  
10 year warranty\*  
Slip resistance:  
• oil-wet ramp test R9

**Note: Sizes are nominal**

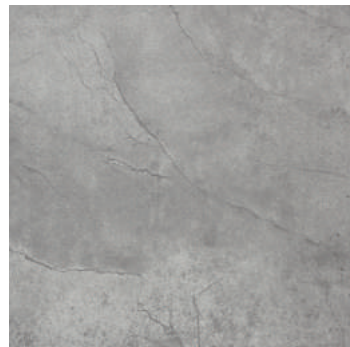




**Antracite**



**Avorio**



**Ghiaccio**



**Moonstone**



**Nocce**



**Sand**