

TECH LAB MONO

Highlighting durability, functionality and simplicity of design, the Tech Lab Mono series reinvigorates stone-look tiles, adding the strength and longevity of porcelain.



national tiles

Available in five neutral colour tones, Tech Lab Mono will complement an extensive range of interior styles to achieve flawless results.

Basic Specifications:

Coloured body porcelain

Natural finish

Rectified edge

Suitable for floor and wall application

Suitable for indoor application

Sizes: 600mmx600mm, 300mmx600mm & 300mmx300mm

Slip rating: R10

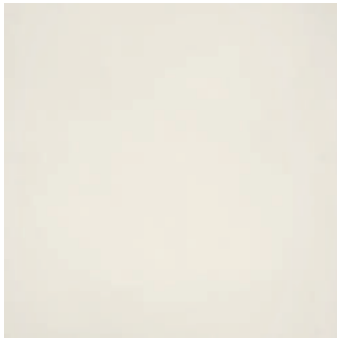
P3

Variation: V2

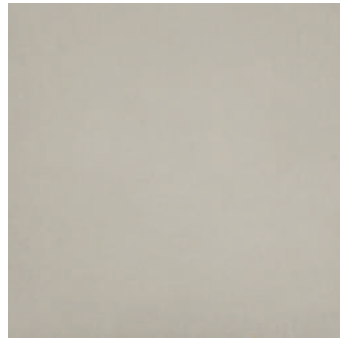
10 year warranty*

Exclusive to National Tiles

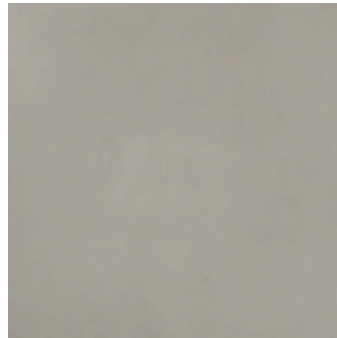




Perla
600mmx600mm



Simple Grey
600mmx600mm



Ash Grey
600mmx600mm

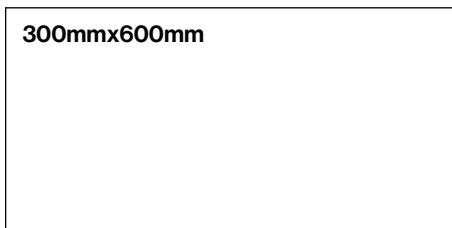


Gunmetal
600mmx600mm



Charcoal
600mmx600mm

other available size:



new size:

